

SOLiD

TECHNOLOGIES

TM

ClearLight ACCESS™

HIGH-CAPACITY DIGITAL DISTRIBUTION

SINGLE FIBER OPTICAL MUX - 16 TRANSPONDER CHANNELS SPECIFICATIONS

SOLiD Technologies ClearLight ACCESS™ unlocks network capacity within an existing fiber plant to achieve economies of scale, reduce capital expenditures and lower operational expenditures through Zero Touch Management™

Using patented ClearLight Laser™ tunable optics technology, ClearLight ACCESS provides 16 independent channels of traffic over a single strand of fiber.

Each channel is capable of carrying GbE, SONET up to an OC-48, or 3GPP ORI (CPRI) up to 3.07Gbps.

ClearLight ACCESS supports multiple topologies including point-to-point, tree-and-branch, chain, and ring.

When deployed for Ethernet services, ClearLight ACCESS combines the benefits of Active Ethernet and fiber savings to deliver the lowest capital cost per subscriber for Gigabit service.

BENEFITS

Installation and commissioning in minutes vs. days

No provisioning required

No active electronics in the field

Plug and play – no changes to plant required and no need for manual attenuation to vary distances

Immune to large distance variation between destinations (-7db to -27db)

Immune to dispersion over large distances

Immune to reflection from splices

Immune to dirty connectors

Immune to temperature variations within operating temperature range

Resilient hardware with redundant power supplies

Seamless SFP interworking including copper based SFPs

Supports simple troubleshooting and reporting

Inventory/stock savings – no need to purchase optical modules per transponder channel

FEATURES

Out of area services – delivers services up to 60km without the need for optical amplification or regeneration; delivers services up to 100km with optical amplification

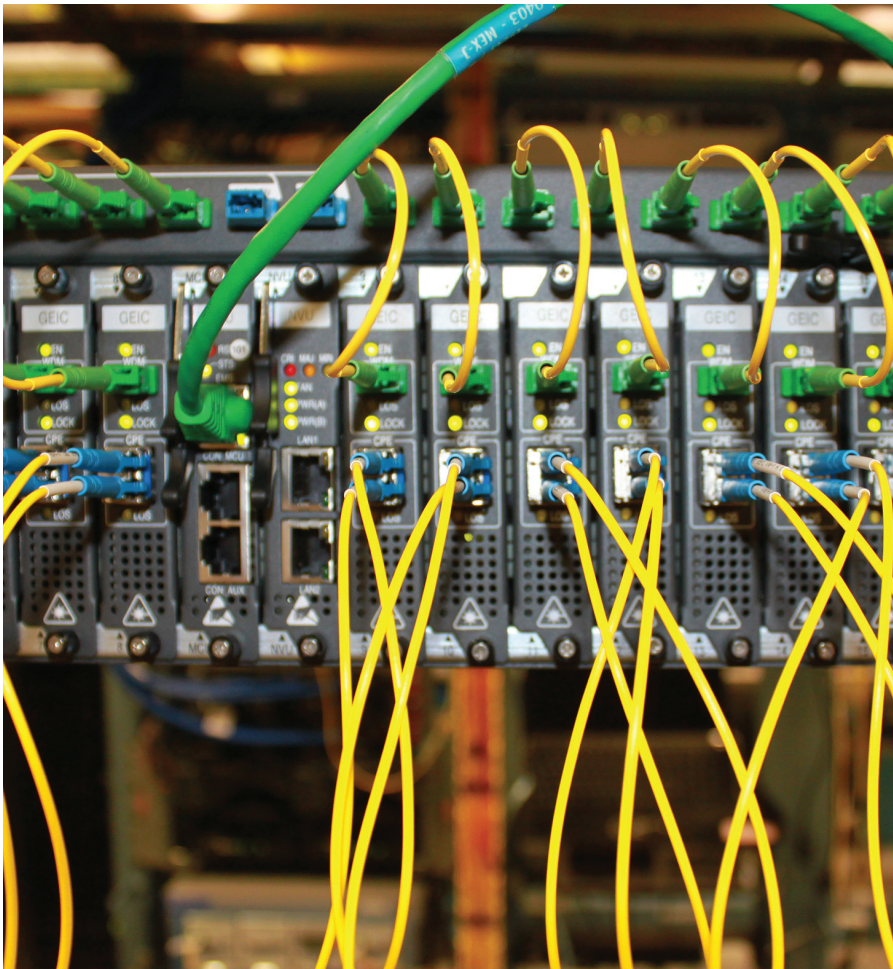
Symmetric dedicated bandwidth and quality of service (QoS) for each transponder channel

Very low latency ~720ns

Zero jitter and packet loss over large distances

No performance degradation in handling jumbo packets

Secure connections without port sharing



GENERAL SPECIFICATIONS



ClearLight ACCESS OLT

System Capacity

- Up to 16 channel (λ) symmetric over a single core fiber

Interface

- Gigabit Ethernet (GbE)
IEEE 802.3z, IEEE 802.3ab (client side option)
- Ethernet PON
E-PON, IEEE 802.3ah
- Gigabit Capable PON
G-PON, ITU-T G.984
- SONET
OC3, OC12, OC48
- CPRI
(x1) 614.14 Mbps, (x2) 1228.28 Mbps,
(x4) 2457.6 Mbps, (x5) 3072.0 Mbps

Optical Characteristics

- Uplink: 16 channel, C-Band
Downlink: 16 channel, L-Band
- 100GHz spacing ITU Grid DWDM
- Dispersion tolerance: 1,700ps
- Colorless, bi-directional
- Transmission distance: up to 60km

Hardware

- 19-inch, 3U
- Including Fan Module

Power

- -48 DC, 1+1 load sharing

Safety Standards and Regulatory Compliance

- UL/CSA 60950-1, FCC Part 15

Protection

- Optical line protection (optional)

OAM&P

- In-band or out-band management
- Alarm, Configuration, Statistics,
- SNMP Agent
- GUI based EMS

Operating Temperature

- -20 ~ +60C



ClearLight ACCESS ONT

System Capacity

- Single channel symmetric

ONT Interfaces

- Gigabit Ethernet (GbE)
IEEE 802.3z, IEEE 802.3ab (client side option)
- Ethernet PON
E-PON, IEEE 802.3ah
- Gigabit Capable PON
G-PON, ITU-T G.984
- SONET
OC3, OC12, OC48
- CPRI
(x1) 614.14 Mbps, (x2) 1228.28 Mbps,
(x4) 2457.6 Mbps, (x5) 3072.0 Mbps

Optical Characteristics

- Uplink: one channel, L-Band
Downlink: one channel, C-Band
- 100GHz spacing ITU Grid DWDM
- Dispersion tolerance: 1,700ps
- Colorless, bi-directional
- Transmission distance: up to 60km

Power

- 110/220V AC

Safety Standards and Regulatory Compliance

- UL/CSA 60950-1, FCC Part 15

Operating Temperature

- -20 ~ +60C
- Hardened -40 ~ +85C



ClearLight ACCESS PASSIVE SPLITTER

System Function

- Bi-directional DWDM optical Mux/Demux

Operating Temperature

- -30 ~ 60C

Hardware

- Outdoor (pole or manhole): Fiber closure type

For more information or complete technical specifications, please visit our website or contact us via email or phone.



SOLID TECHNOLOGIES USA
13224 Lookingglass Road
Winston, OR 97496

Shipping/Receiving

2301 Armstrong St, Suite 101
Livermore, CA 94551

solidtechusa.com

888.409.9997
sales@solidtechusa.com